

BeneVision™
See more With ease

BeneVision™ N22/N19
Patient Monitor

Change your perspective, again.
Maximize your confidence.
Built for a paperless future.



www.mindray.com

P/N: ENG-BeneVision N22/N19-210285x14Px20230907
©2023 Shenzhen Mindray Bio-Medical Electronics Co., Ltd. All rights reserved.

mindray
healthcare within reach

mindray

BeneVision N22/N19
Patient monitor

Always in sight, always in mind



BeneVision. Change your perspective, again.

BeneVision N22/N19

At Mindray, we believe the best way to predict the future is to create it today. We're thinking how to help you save your time in order to treat more patients effectively. We also focus on clinical safety, and efficiency. Now for the first time in the world, the BeneVision patient monitor ROTATES between landscape and portrait. You have both higher and wider clinical views when patient care demands them.



Design. Excellence for visionaries.



Original technology innovations have been combined with thoughtful considerations to improve patient monitoring experience.

During the design process, we strove to make the details “and” instead of “or”, such as the ingenious portrait and landscape display, as well as the single-level menu user interface.



Modular design brings so many options.

- Parameter modularity allows you flexibility in patient care and makes the most of your equipment investment.
- iView module combines a powerful, embedded PC and the patient monitor in the same unit. The innovative design optimizes cooling without the need for a fan.
- Ultra-compact main unit and big screen can be used as a combined unit or separated to make use of the rotating screen feature.



Auto



Built-in



No fan



Seamless

Innovative. Maximize your confidence.

Everyday, Mindray delivers accurate, real-time, physiological measurement data from millions of patients worldwide, which clinicians have come to rely on when making decisions. BeneVision provides the worlds best monitoring technologies for you and promotes new ones continuously.

Cardiology

- Patented CrozFusion™ algorithm for accurate ARR detection
- ST monitoring and ST segment templates
- Real-time QT/QTc measurement
- Glasgow 12-lead resting interpretation

Hemodynamics and volumetric

- Classic C.O. measurement with the SwanGanz catheter
- Less-invasive PiCCO and FloTrac monitoring
- Non-invasive cardiac output with ICG module
- Integrated CCO module with Edwards machine

Airway gas and lung mechanics

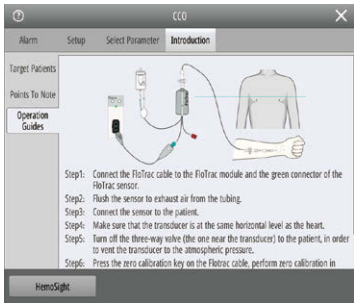
- One-slot CO₂+O₂ module
- Volumetric CO₂ and metabolic measurements
- AION Multi-Gas +SPIRIT respiratory mechanics

Tissue perfusion

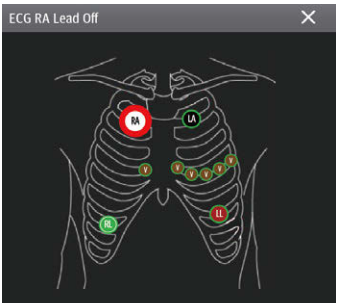
- INVOS rSO₂ module for regional oxygen saturation measurement
- Patented CQI Index to indicate CPR resuscitation quality of the patient

Neurology

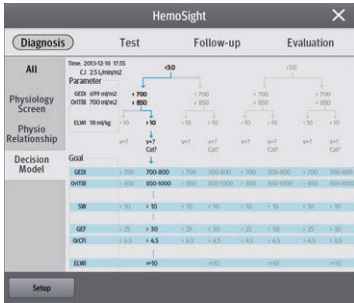
- EEG/aEEG, and BIS/BISx4 monitoring
- Advanced NMT monitoring with 3-axial acceleration detection
- ANI module for analgesia monitoring



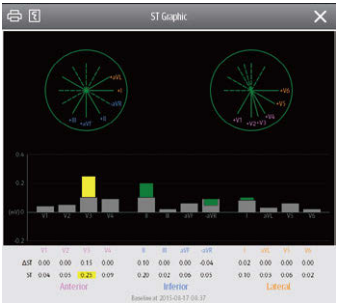
Online Guide



Infographic alarm



HemoSight™
Help clinicians to make decisions through sets of hemodynamic assistance applications.



ST Graphic™
Quickly and accurately detect changes in ST values for analysis.



Comparison review
Events summary and details ease contextual evaluation.



Mobility. Streamlined.

Since the introduction of the world's first portable cardiac monitor in 1964, Mindray has committed itself to being the pioneer in early patient mobilization for better recovery. BeneVision extends the typical mobile monitoring solution with more wireless roaming, data continuity, and streamlined workflow in every situation. Combined with its patient-worn telemetry monitor, which is also a cableless measurement module, BeneVision ensures a supreme level of mobility and offers more freedom to both patient and caregiver.



BeneVision N22/N19 wirelessly pairs with its TM80 and BP10 patient-worn modules for cableless measurement at the bedside and beyond.



Ambulatory patients monitored around the bedside and beyond.



The Mindray classical transport monitoring solution with BeneVision N1 also works seamlessly with BeneVision for unmatched patient safety.

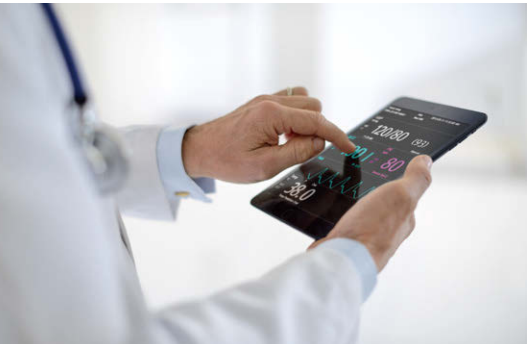


Connected. Built for a paperless future.

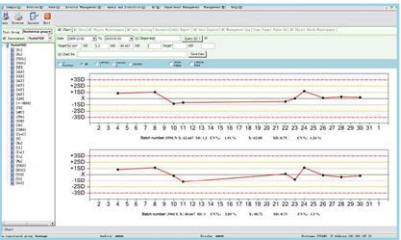
As a pioneer in clinical informatics with patient monitoring, Mindray integrated the embedded PC (iView) in 2007, which enables a patient monitor to run user APPs for the first time in the world. BeneVision enhances the iView open platform with a more intuitive display, modular design, and powerful performance. Patient monitoring and healthcare applications are combined into one workstation at the point of care.

Mindray provides a flexible solution for monitoring your patient's status anywhere, anytime, even when you are away from the clinical environment...Based on layer 3 network structure, the Mindray patient monitoring system has a high network adaptability to integrate seamlessly with your hospital's current network.

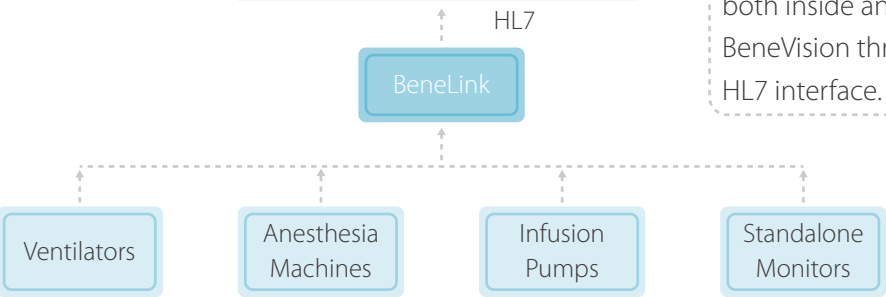
With Mindray's central station and eGateway further connecting BeneVision with your clinical world, bedside device data and other clinical system data is shared to enhance your diagnosis and clinical decision making.



BeneVision EMR(Electronic Medical Record)



BeneLink collects data from up to 4 bedside devices for synchronization to EMR systems both inside and outside the BeneVision through standard HL7 interface.



iView can run your own clinical Apps (such as PACS, LIS, HIS/CIS, and EMR) on one intuitive view and connects with your hospital network infrastructure directly without any additional server or gateway.

With its 1680 x 1050 pixels 22-inch screen, BeneVision N22 has a perfect split layout in portrait display. No need to worry that the waveforms will be obstructed by the iView application window as you browse the patient's information.